

# Shoreham Garden Club Newsletter

July 2008, Volume XXII, No. 5

## President's Message

(Vicki McLane)

What a wonderful turnout for the Midsummer Night Garden Party! The rain held off until the end and a good time was had by all. Thank you, Karen, for once again hosting a great event.

Sandy Romano has two tours planned for the summer. Both should be fun, so please try to make it.

## Garden Conservancy Tours

(Sandy Romano)

**Just a reminder!** Please RSVP and let me know if you would like to join the upcoming Garden Tour sponsored by the Garden Conservancy's Open Days program. It will be on Saturday, July 12th, and we will be visiting 3 beautiful gardens, with lunch at Legend's in New Suffolk.

We will be carpooling from the King Kullen parking lot in Wading River at 9:30. Admission to each garden is \$5, but there will be a limited number of discount tickets available (\$2.50 each) that will be distributed on the day of the tour.

PLEASE RSVP via phone 744-2715 or email at [Sandy926@optonline.net](mailto:Sandy926@optonline.net). Please indicate if you are interested in carpooling and if you will be joining us for lunch.

The June Shoreham Garden Club newsletter provides additional information on the gardens we will be visiting, as well as information on the Garden Conservancy tour that will be held on July 13th in the Cutchogue area, and the Sayville Garden Club Tour on July 19th.

## 2008 Dues

**2008 dues are now past due.** If you have not paid, please mail a check to:

Treasurer, Shoreham Garden Club  
P.O. Box 323  
Shoreham, NY 11786

## Member's Tour

(Sandy Romano)

On Saturday, July 26th, we will be having our first annual (I hope!) "members only" garden tour. It will include 6 gardens belonging to SGC members as well as drinks, snacks, and lunch along the way. There will be no charge. The approximate schedule is as follows:

- 9:30 - Carol Fish's at 27 Lower Cross Road, Shoreham
- 10:00 - Sheila Sussman's at 36 Briarcliff Road, Shoreham
- 11:00 - Vicki McLane's at 15 Circle Drive, Shoreham
- 12:00 - Sandy Romano's at 20 Waverly Court, Wading River (SGC sponsored lunch)
- 1:30 - Pat & Charlie Thompson's at 77 Farm Road West, Wading River
- 2:30 - Bill & Ronnie Schiavo's at 9 Hunters Trail, Wading River

Let's do what gardeners do and share what we have! Perhaps we'll even gain some helpful advice along the way from our very knowledgeable members. If you are interested or have questions, please RSVP via phone 744-2715 or email at [Sandy926@optonline.net](mailto:Sandy926@optonline.net).

## Shoreham Garden Club Schedule 2008

July 12 <sup>th</sup>	Saturday	<b>Garden Conservancy Open Day Tours</b>
July 26 <sup>th</sup>	Saturday	<b>SGC Members Garden Tour</b>
Sept. 20 <sup>th</sup>	Saturday	10:30 Halama Speaker, John Potente, <b>Backyard Wildlife Habitat</b>
October 18 <sup>th</sup>	Saturday	10:30 Meeting, Dan Pichney, <b>Butterfly Gardens.</b>
October 20 <sup>th</sup>	Monday	<b>District II Fall Luncheon</b>
November	TBD	<b>Three-Village Garden Club joint meeting</b>
Dec.7 <sup>th</sup>	Sunday	<b>Holiday Party &amp; Annual Meeting</b> , Carol Ryan's home, Wading River

---

### Scholarship Winner

(Carol Willen)

The Shoreham Garden Club Scholarship is given each year to a graduating senior at the Shoreham-Wading River High School who has excelled in environmental science, ecology, botany or horticulture and who plans to pursue his/her education or personal outreach efforts in one of these areas. Special consideration is given to students who not only have excelled in the classroom but may have participated in research, community projects or internships of environmental significance. This year's Scholarship has been awarded in memory of Elizabeth (Sue) Halama, who was President of the Club from 1998 until her untimely death in 2001.

The recipient of the Halama Scholarship is Kortney Kavanagh. Kortney has taken rigorous science courses and has excelled in A.P. Environmental Science. She will be attending Catawba College in North Carolina with a possible goal of teaching environmental science. Kortney sent us the following thank you note.

*Thank you so much for allowing me to receive your scholarship. It is an honor to be recognized by your club. I am pursuing a degree in education with hopes of teaching some sort of environmental science. But no matter what level of education I teach the environment will always be an important part of my curriculum. Thank you.*

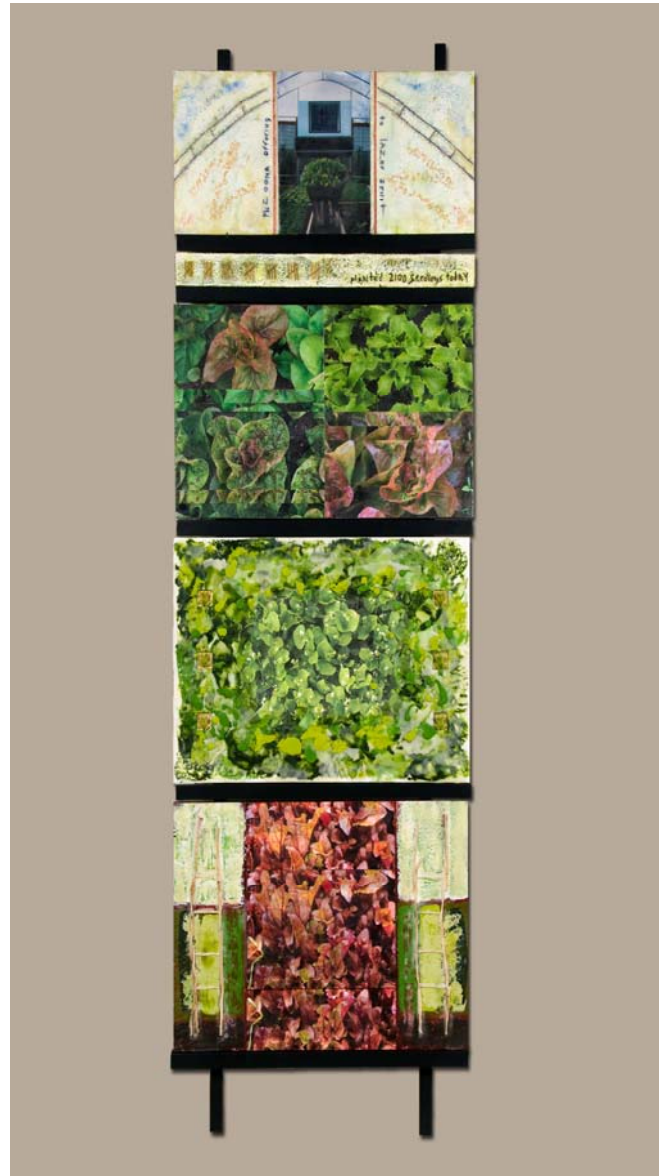
# A Year in Miz Oona's Salad Garden

A series of local seasonal organic photo encaustic collages  
A. Renée Oberdorf

This series of photo encaustic collages shows some highlights from one year at my market salad garden in Warren, Oregon. The year was 2007 to be exact. All the photos were taken at our farm with a few exceptions: the kayak photos were taken on Scappoose Bay, nearby, and one mystery photo was graciously given with permission to use here by a dear friend.

I'm not a photographer. In fact, I resisted buying a digital camera when they first came out unable to imagine what I would take pictures of after the first several thousand of our dogs. But when I received one as a gift, it unexpectedly became my favorite journal tool, so easy to record a pleasing pattern of light and color or a fun moment. Here, I've focused on vignettes I feel express the beauty, vitality and humor of each garden season. (One cannot farm without humor.) It is my hope that an indirect story of love of labor is also suggested. I've combined the photos with collage materials and encaustic, a natural beeswax and tree resin material. The symbol of the ladder is something I'm exploring. It was sometimes used in Native American cultures to symbolize coming forth from the darkness into the light. This seems especially appropriate in terms of a garden, as it's exactly what the plants do.

This work is a departure from the abstract sculpture style I favor. It was inspired by an invitation to show my garden photos. I decided to treat the photos lightly, in other words show them as they were taken, but combine them with encaustic to give them more of the tactile-ness of the garden.



The panels, top to bottom:

## **SPRING**

- Miz Oona Offering to the laZer Spirit
- Lettuces: Red Deer Tongue, Loma, Four Seasons, Speckled
- Claytonia with Frogs
- Heirloom Bull's Blood Beets

## Miz Oona's Salad Garden Cont.

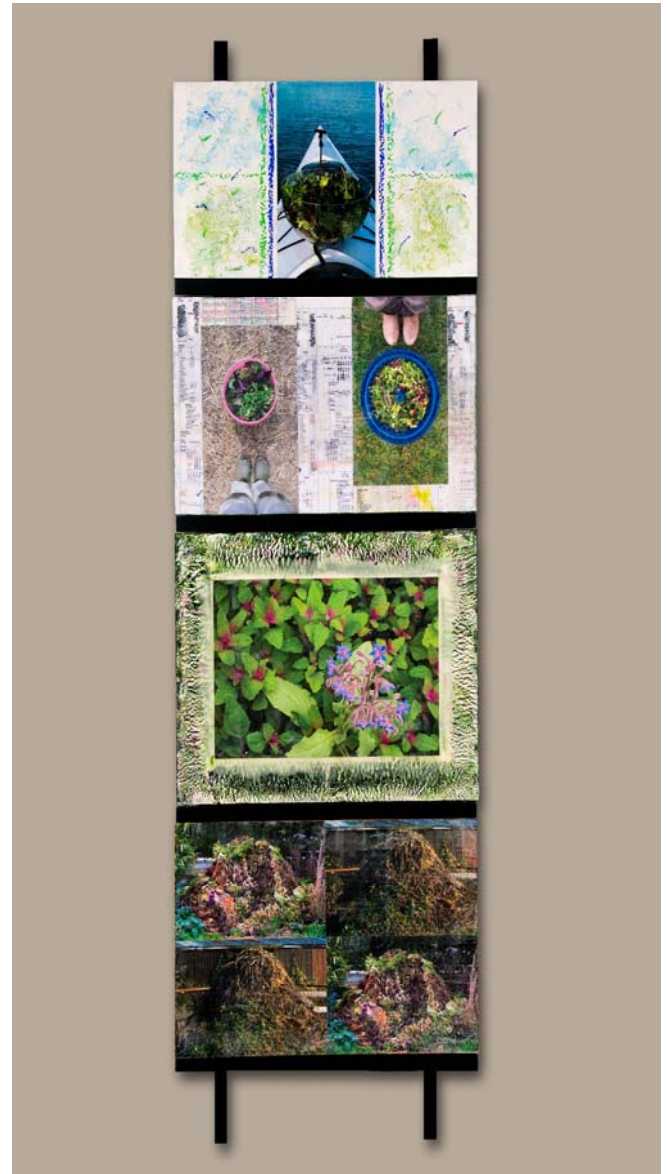
A bit of history:

Encaustic painting dates back to the 4<sup>th</sup> century BC in Greece and Rome. The earliest surviving examples of encaustic painting are portraits on wooden panels attached to Egyptian mummy cases, known as the Fayum portraits, dating from the 1<sup>st</sup> and 2<sup>nd</sup> century AD. Encaustic painting revived in the 18<sup>th</sup> century after a discovery of artifacts at Pompeii. Many of the classical painters of the 18<sup>th</sup> and 19<sup>th</sup> centuries used it, giving their paintings the luminosity they're known for. Jasper Johns is credited with bringing encaustic into contemporary art.

'Encaustic' comes from the Greek 'enkaustikos' meaning 'to burn in'. To work with encaustic, one must melt the medium on a hot plate, paint, pour and slather it on the surface, then burn it in with a heat gun, torch or other heat tool so it fuses to the layer below. Many layers are generally built up, anywhere from several to fifty or more. Because of the tree resin, encaustic is very durable, evidenced by the ancient artifacts still in existence.

Questions, comments are welcome:

[mizuna@comcast.net](mailto:mizuna@comcast.net)



**Shoreham Garden Club**  
**P.O. Box 323**  
**Shoreham NY 11786**

### **Officers**

President - Vicki McLane  
Vice-President – Barbara Foley  
Secretary – Carol Ryan  
Treasurer – Mimi Oberdorf

**Newsletter Editor** – Diana Fuchs

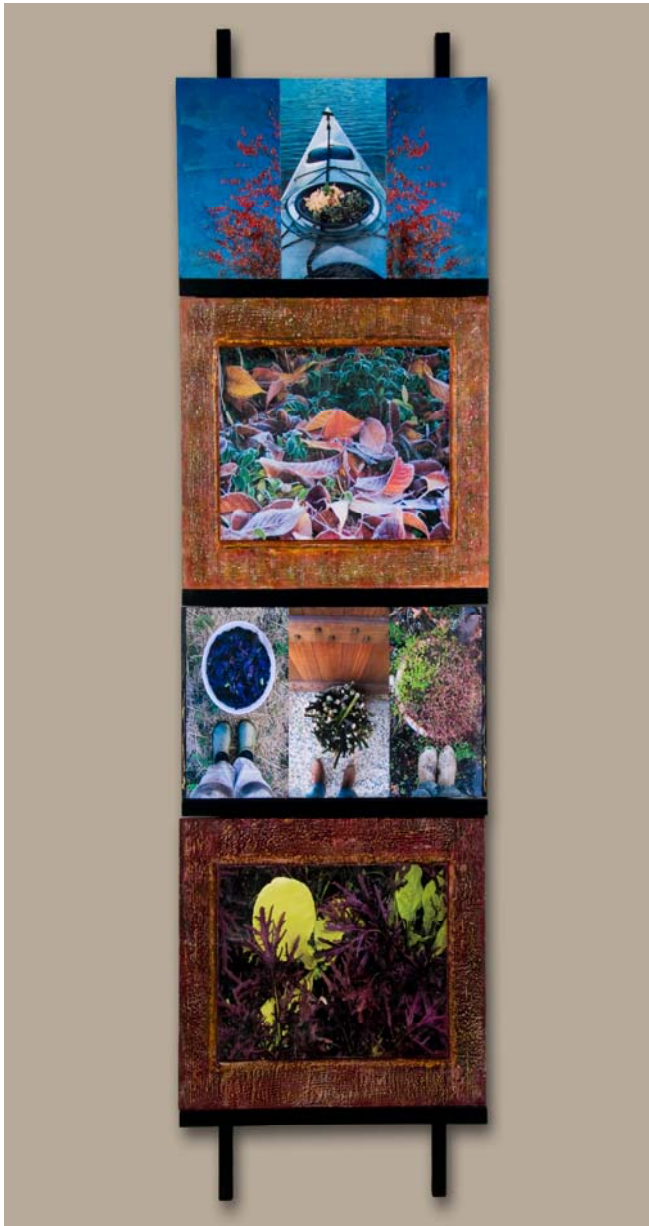
[www.shorehamgardenclub.org](http://www.shorehamgardenclub.org)

The panels, top to bottom:

### ***SUMMER***

- Miz Oona Garden Salad on Kayak
- Summer Harvest
- Magentaspreen Goosefoot with Borage Flower
- Summer Compost

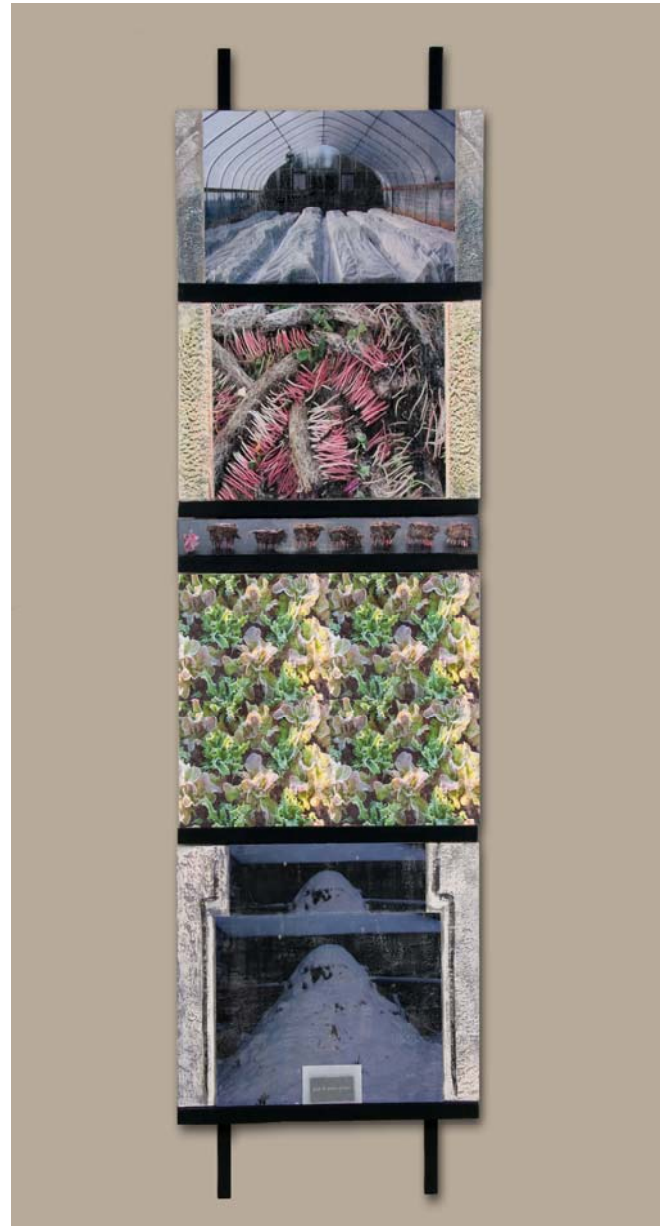




The panels, top to bottom:

**FALL**

- Mushroom Risotto and Micro Green Salad on Kayak
- Frozen Leaves
- Buckets with Feet
- Ruby Streaks Mustard with Tokyo Bekana Rising
- Summer Compost



The panels, top to bottom:

**WINTER**

- Blanketed Greenhouse Beds
- Micro Green Roots and Stems
- Root Bug Eradication
- Frozen Lettuce and Frisee
- Winter Compost Mausoleum for End of Season Gripes